

KERN COUNTY - CENTRAL VALLEY AMATEUR RADIO CLUB

THE COMMUNICATOR

October 2017

Editor N6SWR

CHP Enforcement of Hands Free Law

The new law which substantially expanded the scope of Section 23123.5 CVC, from simply prohibiting the use of a wireless phone to text while driving, to prohibiting holding and operating a handheld wireless telephone or an electronic wireless communications device while driving. However, a driver may still use a handheld wireless telephone or an electronic wireless communication device while driving when: The handheld wireless communication device is mounted to a windshield (in compliance with Section 26708[b] CVC), dashboard, or center console in a manner which does not interfere with the drivers view of the road, and; The drivers hand is used to activate or deactivate a feature with a single tap or swipe of the drivers finger. Pursuant to Section 23123.5(f) CVC, the definition of an electronic wireless communications device is: **For the purposes of Section 23123.5(f) CVC, a radio installed and mounted in a vehicle with a wired hand microphone (e.g., business band or citizen band [CB] radio, Amature Radio) is not considered a wireless communication device, nor is it considered a specialized mobile radio device, and therefore is not subject to enforcement under this section. This information will be added to an upcoming revision to Highway Patrol Manual 100.68, Traffic Enforcement Policy Manual.** The above letter has been edited but clearly we can continue to use our installed ham radio's with wired hand mic's, but handheld radios are going to be ticketed. Thanks to James Johnston, KK6DLN for locating this information on the California Highway Patrol's website.



Club President Larry Callahan KF6JOQ

Hello friends,
This months club meeting will be our bake sale fundraiser, you can show off your baking skills or like me go to the store.

The bake sale will have a Halloween theme. We will also have a short program from Dave kg6ysz. If you worked the CQP don't forget to send me your log.
God bless and good DX.

Larry Callahan
KF6JOQ 661-834-3204

Steppir 2 Element Beam

By Terry Godley N6AJ

It is done, Well almost. As some of you may recall, in May my tower and the Cushcraft X-7 beam came crashing down after 17 years. Since the X-7 was all bent and twisted I opted for another beam. Things have changed over the last 17 years that made it hard to get a crane in and put the antenna up. I did some research and since the tower was on the ground and leaned on saw horses, I knew I couldn't put up a monster beam. I only had a limited space to install a boom on the tower. If I was to put up a X-7 which has a boom of 18 feet, I would be in trouble. I chose the Steppir 2 Element Beam for the reason it had a 4 foot long boom which I could assemble on the ground. The next thing was how in heck to raise the tower without a crane.

A contractor friend of mine sent Five of his crew over to lift it up. After 23 minutes it went up. During the California QSO party I was able to use the antenna and get familiar with the Steppir Controller. Thanks to Ben N6SWR, Lou W6UR and Steve Holloway and company and special thanks to my wife for listening to me complain when the tower fell.

SWAP-MEET Club Meeting & Lunch

The Club Swap-Meet was held Saturday September 23rd, the location is Jastro Park. Swap meet items for sale were not as many as in years past, but the weather was very nice so it was an enjoyable day in the park. The swap-meet was followed by Club Officer nominations and a full slate of officers were nominated for 2018, ballots will be mailed to members for voting in November. The lunch was a pot luck style and their was plenty to eat with many deserts.



Above photo: left Tim Capehart N7BJD, Neal Janzen N6YGG and Bill Hopper AB6CF enjoying the moring in the park with fellow hams.

---Additional photo's continued on page 3---

**Oct. 26th Club Meeting 6:00pm
2101 Ridge Road
(Mt Vernon and Ridge Rd.)**



The club 443.900 repeater is on the air as of Wednesday 9/27/17. For those hams that have not used this local open repeater with their dual-band HT, please try it in the local area.

Take your HT while bike riding. It's in a great location for a local chat channel when you need more distance than simplex can provide and don't need to talk 120 miles through Breckenridge.

---Artical & Photo's continued on page 2---

Club Officers & Directors

President - Larry Callahan
KF6JOQ kf6joq@sbcglobal.net
1st VP - Mario Arribas
N6ABT n6abt@hotmail.com
2nd VP- Joe Hart
WD6FPE ed6fpe@gmail.com
Secretary- Neal Janzen
N6YGG neal@janzen.org
Treasurer- James Johnston
KK6DLN jimthej@me.com
Director- Johnthan Greywacz
Kk6IFS jgrewacz@bak.rr.com
Director - Dan Hart
KE6UGH (no email)
Director - Tim Capehart
N7BJD fireinst@pacbell.net
Past Pres- John Stumm
KG6ZBN jstumm@bak.rr.com



The Repeater looks South stright down North Chester Avenue into Downtown Bakersfield.

It's also good for bike races/marathons, etc. along the Kern River bike path from Lake Ming, Cal State and to end of path at Highway 43 Enos Lane.

User information:

443.900 MHz, plus 5.0 MHz offset, tone 100 Hz.

No controller, not linked, just a plain analog Kenwood repeater with built-in CW-ID without any beeps or bops, and it's very quiet.

Location:

Chevron 25 Hill microwave site, north of Oildale about one mile, and straight up North Chester Avenue into Downtown Bakersfield.

Elevation: 822 ft AMSL, 60 ft. tower.

Mobile coverage of the repeater has been road tested with my Yaesu FT-8900 on low power (**5 watts**) with rooftop 3 db gain antenna:

Highway 58 east to Highway 223

Highway 99 south to I-5, Grapevine and lower waterhole.

Highway 166 west to I-5, Old River Road, Maricopa, Grocer Grade summit, truck brake check.

Highway 119 west to summit of Elk Hills, then spotty to Dustin Acres, solid to Valley Acres, Taft, Maricopa

Highway 33 north from Grocer Grade summit to Taft, Buttonwillow, junction of Highway 46.

Highway 46 west from Highway 65 to Wasco, I-5, Lost Hills.

Highway 99 north to Whistler Road

Highway 65 north from Highway 99 to Merced Ave.

Highway 178 from Highway 99 east to Fairfax road then spotty to junction 184 and mouth of canyon.

This low level repeater is unique compared to other mountain top repeaters on Breckenridge, Grapevine, Mt. Adelaide, etc.

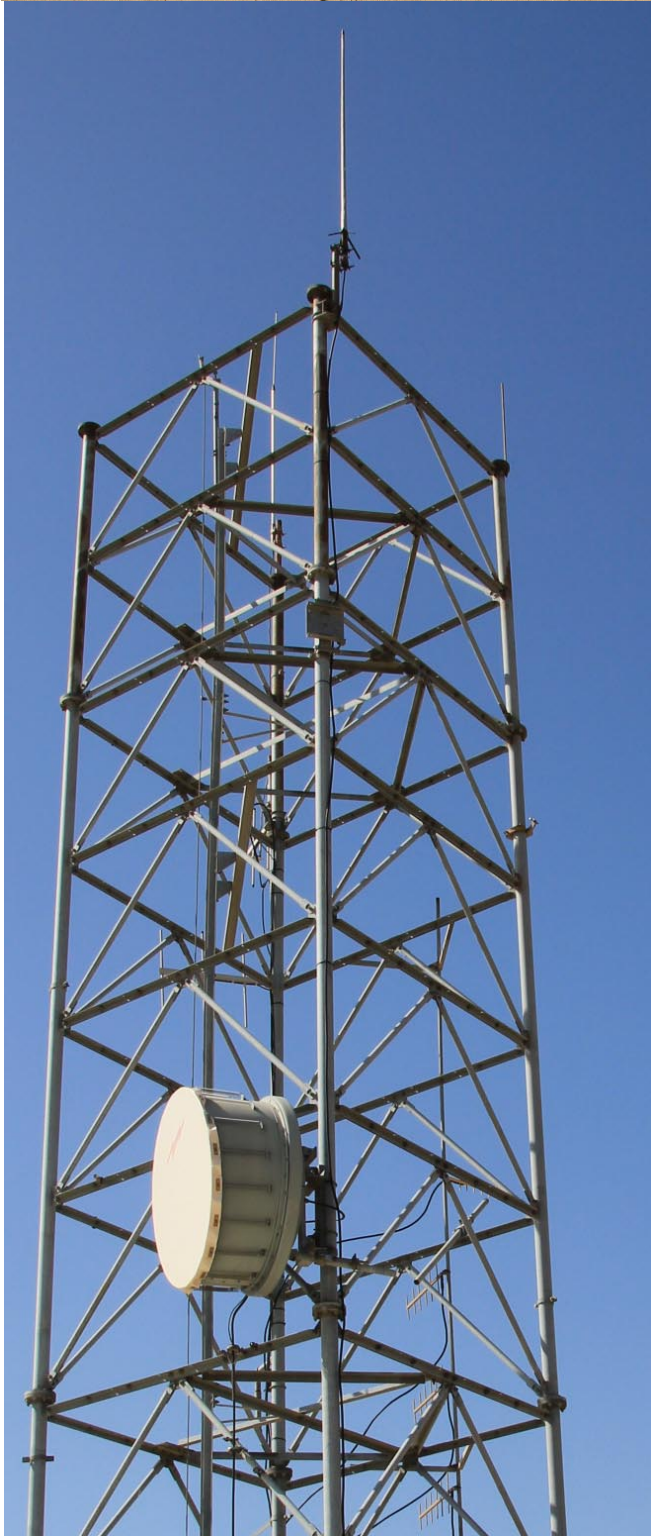
The high altitude repeaters (up to 7400 ft.) talk down to the user at 400 ft. elevation of Bakersfield.

The 443.900 repeater is basically in the bottom of a bowl in the San Joaquin valley. So as the mobile unit travels 58 east, 99 south, 166 west, 46 west you are gaining elevation up the sides of the bowl, being higher than the repeater , except when going north up I-5, 99 and 65 where you are lose elevation compared to the repeater antenna at 862 ft. and loose signal.

Obviously, HT coverage is less; limited to the Bakersfield metropolitan area unless you use a SMA adapter with roof mounted antenna, full 5 watts power and fresh charged battery.

Thanks to Jon Armstrong K6QXG, for monitoring my mobile signal and giving many signal quality reports.

Dave Light
KG6YSZ
-73-



SWAP-MEET and LUNCH



**Jerry Waclawski
KB7BX**



**John Strumm
KG6ZBN**



**ARLY FEIL
N6INT
DOG "Ecru"**



**Connie Turk
KD6KMR**

**Dan Turk
WA6JRP**



**James Johnston
KK6DLN**

**John Strumm
KG6ZBN**

KENWOOD

Listen to the Future

HIGH FREQUENCY PRIVILEGES CHART



By Gordon West for Kenwood USA Corporation

1000 kHz = 1MHz (ie 7225 kHz = 7.225 MHz)
..... = No Privileges Until Upgrade!


www.kenwoodusa.com

KENWOOD U.S.A. CORPORATION
Communications Sector Headquarters
3970 Johns Creek Court, Suite 100, Suwanee, GA 30024

ADS#11109

KENWOOD

Listen to the Future

Study with the best! Gordon West, WB6NOA & The W5YI Group - www.w5yi.org

VHF/UHF MICROWAVE Band Plan

EXTRA • ADVANCED • GENERAL • TECHNICIAN

NOVICE RESTRICTED AS INDICATED



BANDWIDTH

XW = 6MHz + BW
W = 1MHz BW
M = 100kHz BW
N = 50kHz BW

AM - Amplitude Modulation
ATV - Amateur Television
BCNS - Automatic Propagation Transmitter (Beacon)
CW - Morse Code
Data - packet, RTTY, Amtor
DX - Distant station contacts (longer range than usual)
FM - Frequency Modulation
FM Links - FM relay from one repeater to another
FM Repeaters - FM relay stations

FM Simplex - FM direct contacts
Link - relay stations for data & voice
Phone DX - long distance voice transmission
Point to Point Data - automatic packet radio transfer stations
*R/C - radio control models
RPT/IN - your transmit frequency to a repeater
RPT/OUT - output side of FM repeaters
SATS - Satellite & Space Shuttle Communication
Space - Satellite Operation

Space Telecommand - uplinks to control satellites
SS - Spread Spectrum
SSB - Single Sideband Weak-Signal Work
SSB/CW - both Sideband & Morse Code
SSTV - slow scan TV
Wide Band FM - television audio
Wide Band - FM, AM, Spread Spectrum, Television